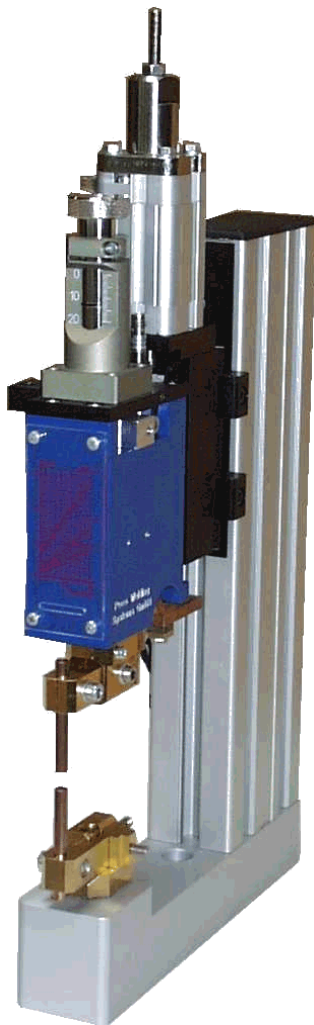


Weld Head F120



Characteristic features

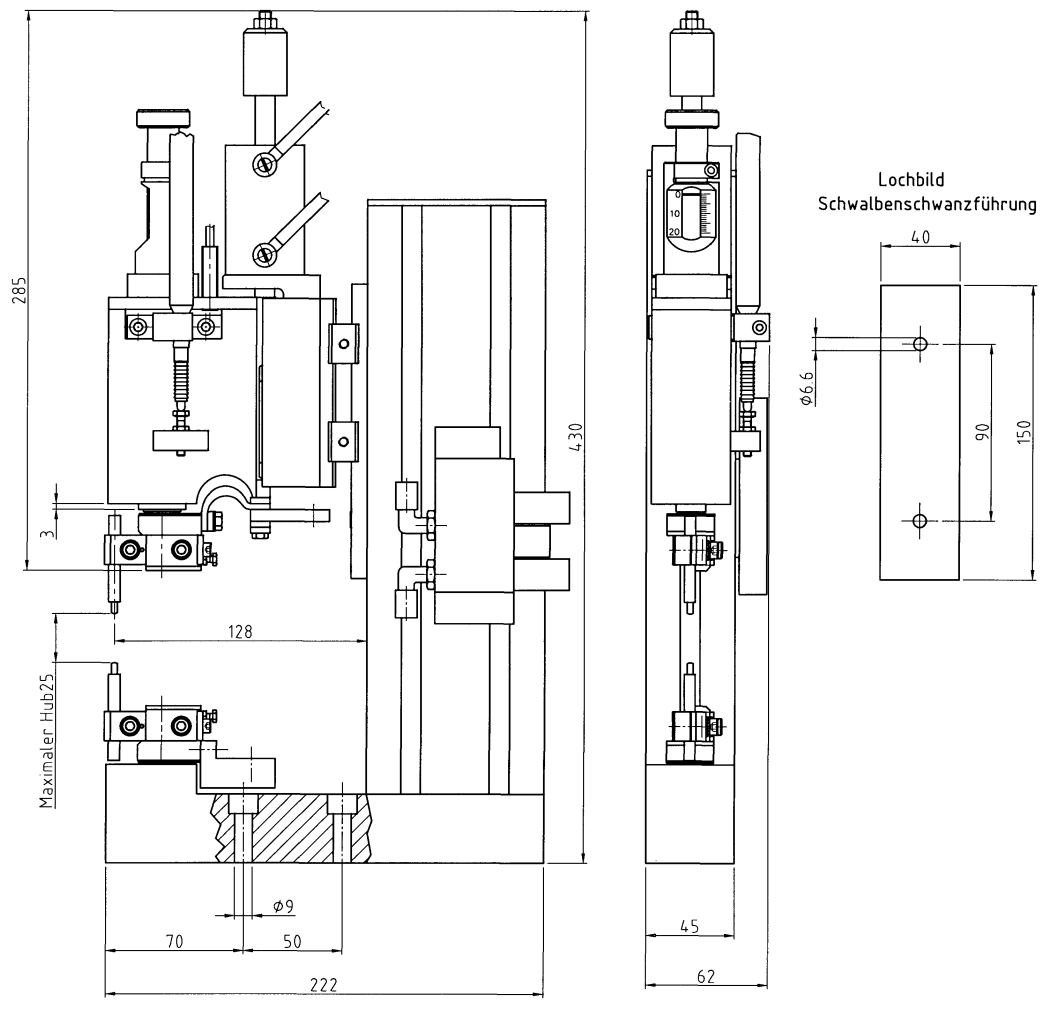
- Application-specific modifications available
- Wide range of applications
- Outstanding dynamic response
- Outstanding follow-up properties
- Short welding times

Applications

- Automation
- Maximum quality requirements
- Safety-critical applications
- Materials with very poor welding properties

Use

- Maximum process safety/reproducibility
- Maximum grade of weld
- Maximum availability/reliability
- Good economic efficiency
- Ease of maintenance



Technical Data

F120-S

General

Part Number

865.03 002

Execution

With spring types 0 to 3 for force ranges 1.2 to 150N, with pneumatic valve
With additional light flexible strip for retooling to obtain lightweight version

Options

As automatic weld head without stand and without lower electrode holder
Add-on set - displacement measuring sensor

Mechanical Data

Weld Force Range

1.2 to max. 150 N (load range dependent on the spring used)

Maximum Rating

5 kA (2 kA with light flexible strip)

Control of Closing Stroke

Pneumatic

Control of Welding Stroke

Via pre-tensioned spring

Weld Force Adjustment

Using adjustable screws on the scale housing

Air Pressure Supply

6 bar

Electrode Holder

Quick-change holder made of gold-plated Al at the top and bottom

Electrode Shape

Cylindrical, d = 6 mm

Weld Cable

2 x 95 mm², length: 700 mm

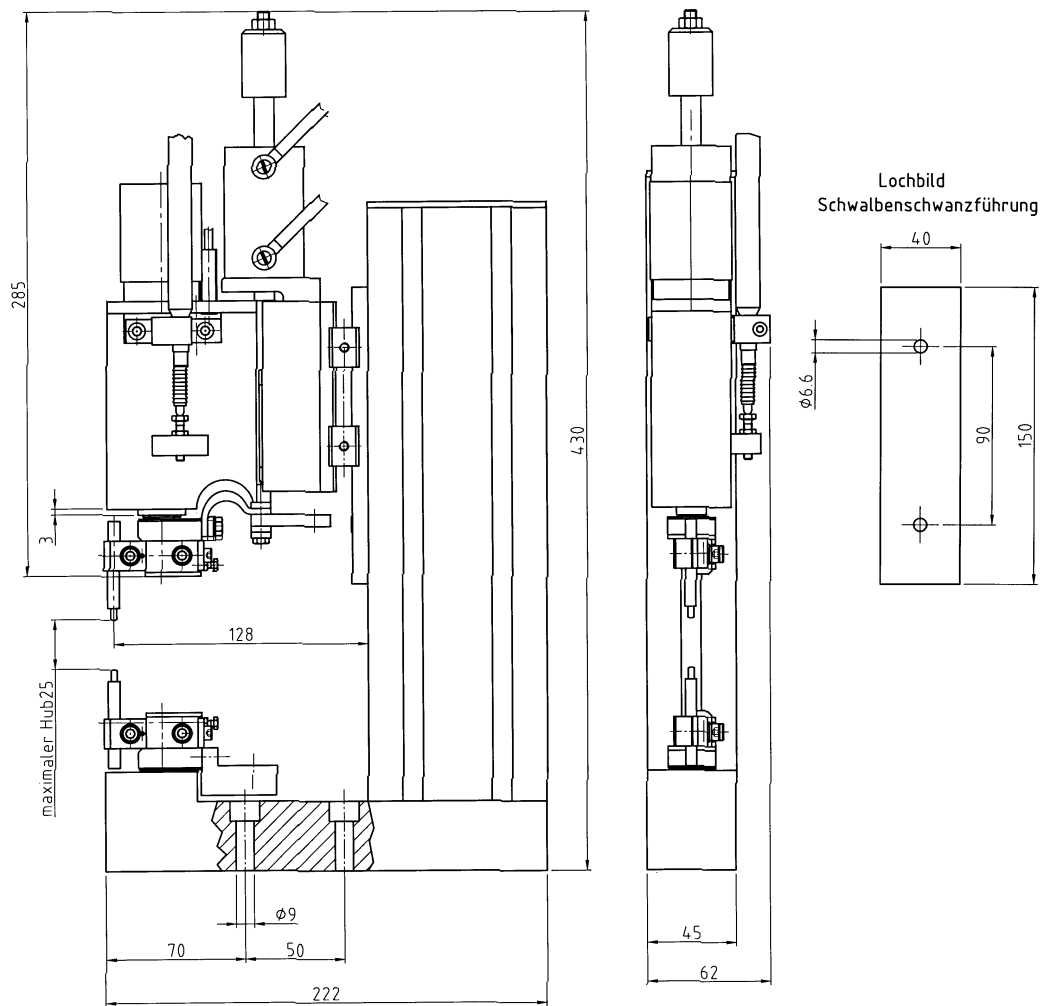
Weight

Approx. 5.5 kg (without secondary cable)

Operation Data

Ambient Temperature

0 - 40°C



Technical Data

F120-15

General

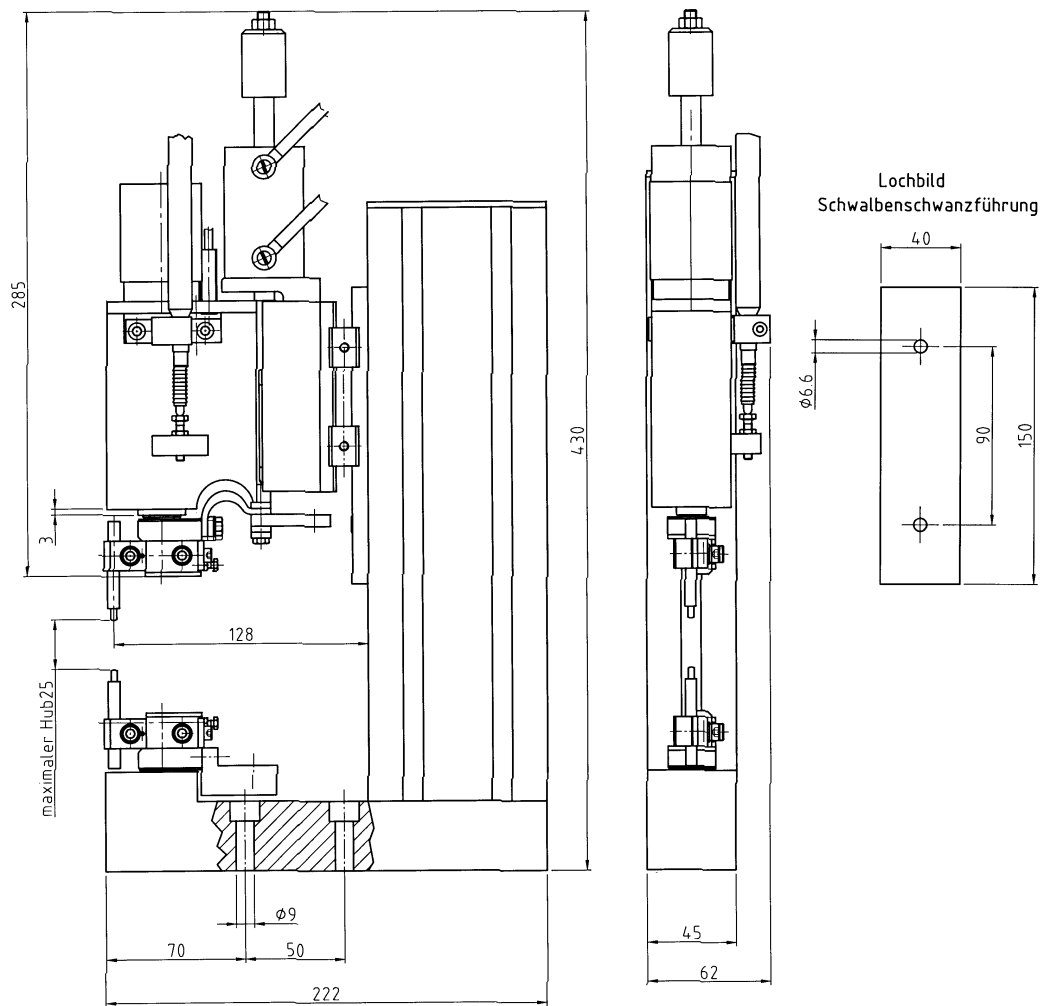
Part Number	865.03 003
Execution	With power actuating cylinder
Options	As automatic weld head without stand and without lower electrode holder Add-on set - displacement measuring sensor

Mechanical Data

Weld Force Range	1.2 to 15 N
Maximum Rating	2 kA
Control of Closing Stroke	Pneumatic
Control of Welding Stroke	Via pre-tensioned spring
Weld Force Adjustment	Via adjustable pressure control valve or proportional valve
Air Pressure Supply	6 bar
Electrode Holder	Quick-change holder made of gold-plated Al
Electrode Shape	Cylindrical, d = 6mm
Weld Cable	2 x 95 mm ² , length: 700 mm
Weight	Approx. 5.5 kg (without secondary cable)

Operation Data

Ambient Temperature	0 - 40°C
---------------------	----------



Technical Data

F120-150

General

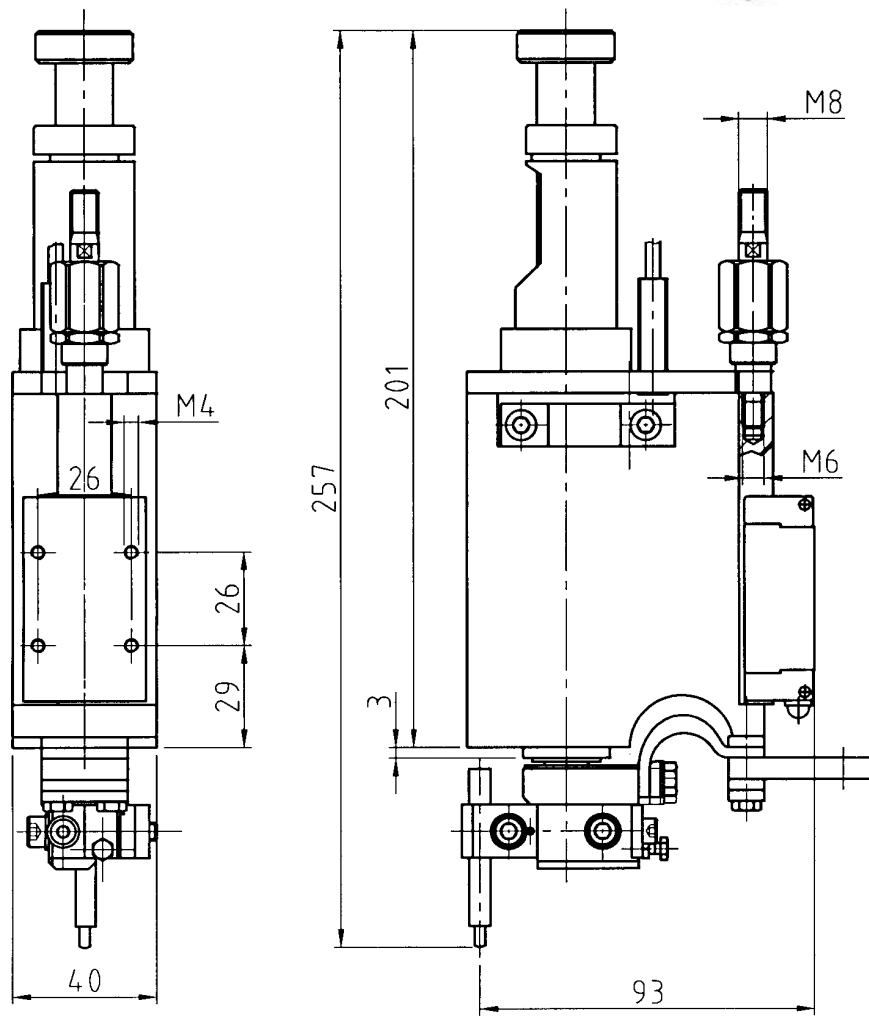
Part Number	865.03 006
Execution	With power actuating cylinder With stand and lower electrode holder
Options	As automatic weld head without stand and without lower electrode holder With add-on set - displacement measuring sensor

Mechanical Data

Weld Force Range	45 to 150 N (optionally 10 - 45 N or 18 - 90 N)
Maximum Rating	5 kA
Control of Closing Stroke	Pneumatic
Control of Welding Stroke	Via pre-tensioned spring
Weld Force Adjustment	Va adjustable pressure control valve or proportional valve
Air Pressure Supply	6 bar
Electrode Holder	Quick-change holder made of gold-plated Al at the top and bottom
Electrode Shape	
Weld Cable	2 x 95 mm ² , length: 700 mm
Weight	Approx. 5.5 kg (without secondary cable) Cylindrical, d = 6mm

Operation Data

Ambient Temperature	0 - 40°C
---------------------	----------



Technical Data

General

Part Number
Execution

Options

Mechanical Data

Weld Force Range
Maximum Rating
Control of Closing Stroke
Control of Welding Stroke
Weld Force Adjustment
Air Pressure Supply
Electrode Holder
Electrode Shape
Weld Cable

Operation Data

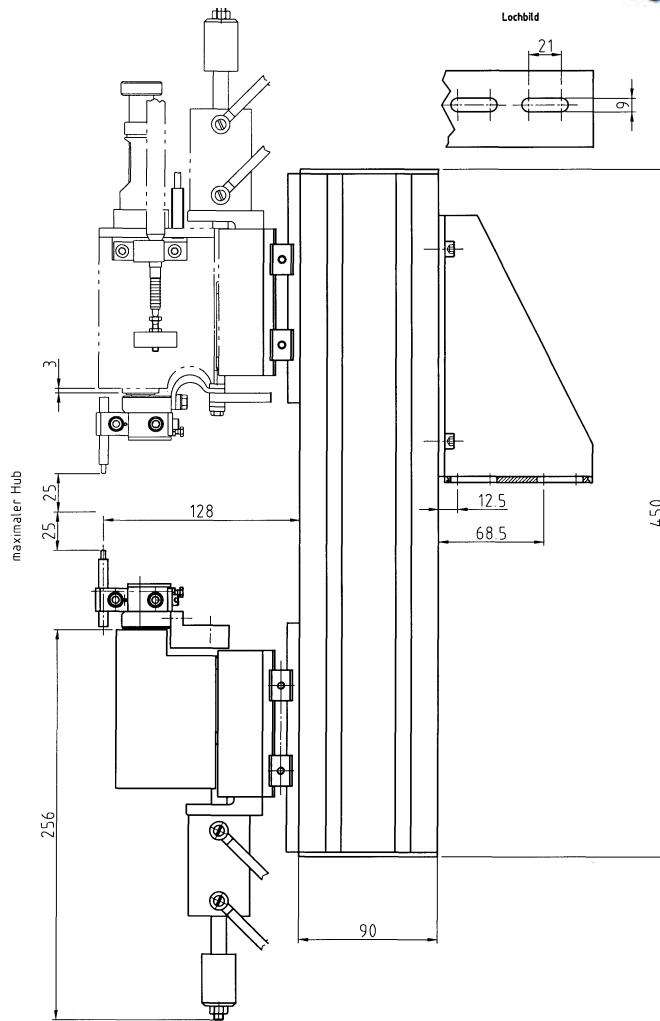
Ambient Temperature

F120-M

865.03 007

With additional light flexible strip for retooling to obtain lightweight version
Without stand and without lower electrode holder
With add-on set - displacement measuring sensor

1.2 to max. 150 N (load range dependent on the spring used)
5 kA (2 kA with light flexible strip)
Mechanical (e.g. using a cam plate)
Via pre-tensioned spring
By means of scale casing
6 bar
Quick-change holder made of gold-plated Al
Cylindrical, d = 6 mm
1 x 95 mm², length: 700 mm



Technical Data

General

Part Number
Execution

F120-Hub

865.03 013
Stand for F120-M (without weld head)

Mechanical Data

Control of Closing Stroke
Air Pressure Supply
Electrode Holder
Electrode Shape
Weld Cable

Pneumatic
6 bar
Quick-change holder
Cylindrical, $d = 6 \text{ mm}$
1 x 95 mm², 700 mm long

Operation Data

Ambient Temperature

0 - 40°C